



Enclosure Series

Extra Protection For Your FingerTec Terminal



Enclosures, made of transparent thermoplastic or acrylic glass, are specially designed to fit each FingerTec terminal's model for extra protections from dust, water, unnecessary punching of keypad and vandalism. The FingerTec enclosures are intended to reduce surrounding mild environmental hazards to lengthen the lifespan of the terminals but they are not made dust or waterproof to endure extreme weather conditions.



Customized to Fit Perfectly

The enclosure sizes are customized to be able to accommodate our various terminals, with windows and openings for your fingerprint scanning, USB flashdisk, and WIFI antenna



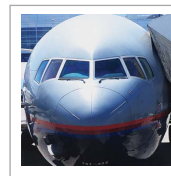
No More Vandalism

Is your FingerTec terminal exposed to damage? The robust and resistant material of the FingerTec enclosures help protect against vandals and other physically damaging forces that you may not foresee.



Providing Transparency

The enclosure is easy on the eyes with the material allowing 92% of visible light through at a thickness of 3mm.



Robust Material

The enclosures are made of a robust material that does not fade, discolor or crack easily, and most scratches can be easily buffed away. It is no wonder this material is used on airplane windows!



Card-friendly

Have you opted for card verification? The enclosures still allow you to use your card scanning technology with the "touch and go" concept. No interference involved.



Strong But Light

These protective enclosures are not just hard, but also light. This makes it suitable for mounting in most surfaces.



Protect Your Terminal

FingerTec enclosures help protect your terminal from dust and vandalism. So don't hesitate to install your terminals outdoors anymore!



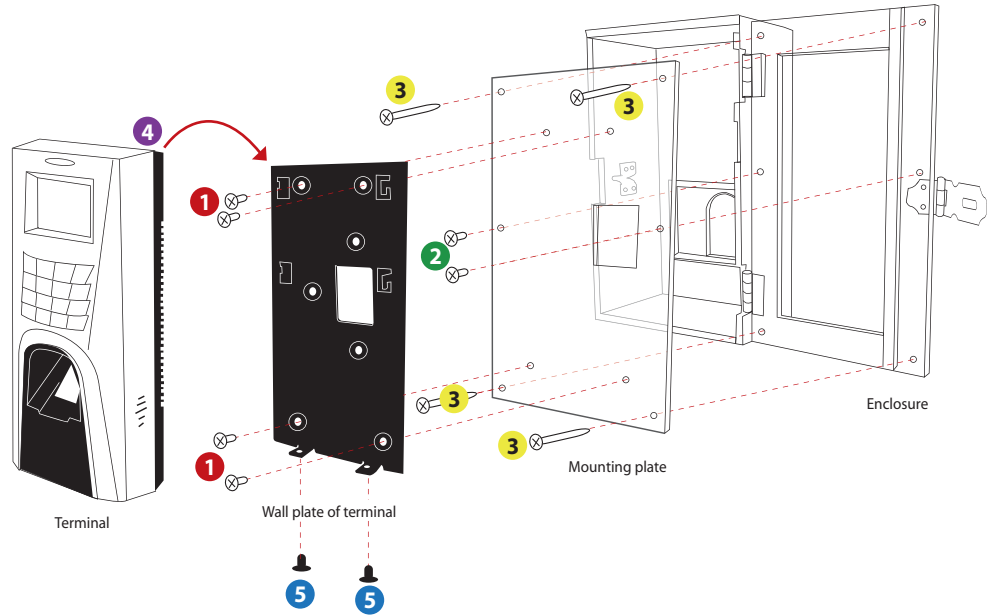
Simple Installation

Installing these terminals are a piece of cake. With a mounting plate included, the enclosures come with an DIY installation guide to make things easy.



LAYOUT PLAN

Installation Diagram



1. Position the wall plate properly on top of the back plate; tighten the bolts and nuts to join these two plates together securely.
2. Position the back plate that has been attached to the wall plate, and the terminal to the enclosure; tighten the screws to secure them on the enclosure.
3. Mount the enclosure on a wall or a surface and tighten the screws to secure its position.
4. Hang the terminal on the wall plate, tighten the 2 screws at the bottom of the terminal.
5. Make sure that the enclosure has been mounted firmly by tightening all the screws.

Note: Installation of enclosure with access control models

Before you start with step no. 1 above, make sure that all the terminal's wires are put through the enclosure, back plate and wall plate, and all the wires are connected to the terminal's port correctly.

SPECIFICATIONS

DIMENSIONS (L X W X H), mm & WEIGHT, kg	
Kadex	: 118 x 86 x 165 (0.5)
AC900	: 127 x 70 x 205 (0.5)
M2/R2	: 127 x 70 x 205 (0.52)
AC100	: 222 x 78 x 165 (0.66)
TA100	: 224 x 77 x 165 (0.66)
TimeLine 100	: 224 x 77 x 165 (0.68)
Q2i/TA200 Plus	: 224 x 75 x 185 (0.72)
i-Kiosk 100	: 290 x 86 x 345 (0.82)
i-Kiosk 100 Plus	: 290 x 86 x 345 (1.68)
Face ID 2	: 192 x 130 x 230 (0.95)
Face ID 3	: 116 x 83 x 234 (0.6)
Face ID 4/4d	: 172 x 137 x 172 (0.65)
MATERIAL	Poly(methyl methacrylate) (PMMA)
THICKNESS	5mm
DENSITY	1.18g/cm ³
MELTING POINT	160°C
BOILING POINT	200°C



Packaging

Dimension (mm) : 298(L) x 123(W) x 222(H)
*Apply to all enclosures except i-Kiosk 100 Plus, Face ID 2 and Face ID 4/4d

Authorized Reseller: